

INSTRUCTIONS for REU-PVA (Pressure Valve A)

The REU-PVA valve is suitable for use with Rinnai Infinity Hot Water Services only and is used when manifolding 2 to 5 units in line to supply a common hot water requirement. The valve can be installed, horizontally, vertically or diagonally as long as the direction of flow is observed.

The following instructions will cover up to 5 units manifolded in line. Please follow the instructions carefully to ensure correct operation.

- (1) Look at the back of the valve to determine the direction of flow.
- (2) Install the valve into the water pipe supplying the second hot water service so that the arrow points towards the unit.
- (3) The valve comes pre-set for installation to the second unit so no adjustment should be required for unit 2. To check this is correct, you should be able to see two grooves clearly on the rod and the third locked by the securing clamp.
- (4) If the valve is not as stated in step 3. Remove one screw from the securing clamp and loosen the other. Swing securing clamp away from the rod and pull rod out until the securing clamp lines up with groove three. Swing the securing clamp back into position and replace screws.
- (5) Follow steps 1-2 for unit number 3. When installed in position, remove one screw from the securing clamp and loosen the other. Swing securing clamp away and push rod in until the securing clamp lines up with the second groove. Swing the securing clamp into position and replace screws.
- (6) For units 4 and 5, follow steps 1 – 2. When installed in position, remove one screw from the securing clamp and loosen the other. Swing securing clamp away and push rod in until the securing clamp lines up with the first groove. Swing the securing clamp into position and replace screws.

TROUBLESHOOTING:

Symptom	Check Points
No flow to unit	Check valve flow direction
Units fire out of order	Check rod settings as per instructions
Units 1,2 or 3 fire together	Check rod settings as per instructions
Units 4 and 5 fire together	Normal operating condition

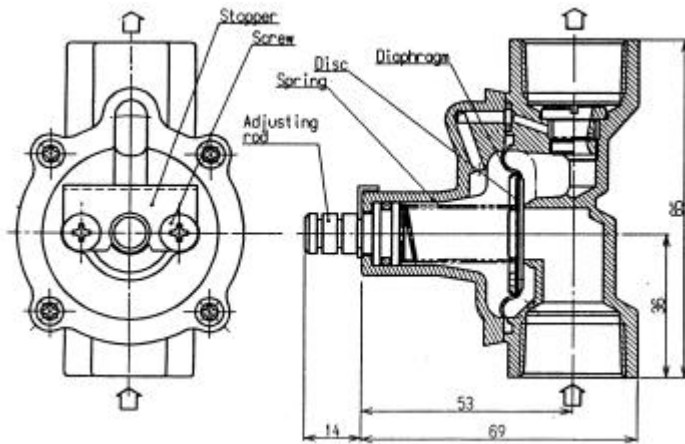
DESIGN

The REU-PVA is designed to be fully open or fully closed and works using a “snap action”. The valve will not allow any flow until a specified pressure difference is measured between the incoming and outgoing sides of the valve. Setting adjustment is achieved via the adjusting rod and increases or decreases the required pressure depending on the adjusting rod position.

Using this style of valve ensures that no cold water can bleed into the hot water line, ensuring temperature stability.

CONSTRUCTION

The body of the valve is cast from copper alloy and uses stainless steel for the spring and diaphragm disc. The diaphragm itself is made from heatproof durable rubber.



SPECIFICATIONS

Connection:	¾ Female
Heat Resistance:	Maximum 70°C (158° F)
Water Pressure:	Maximum 1.75 MPa
Fluid Type:	Water only

TYPICAL INSTALLATION:

