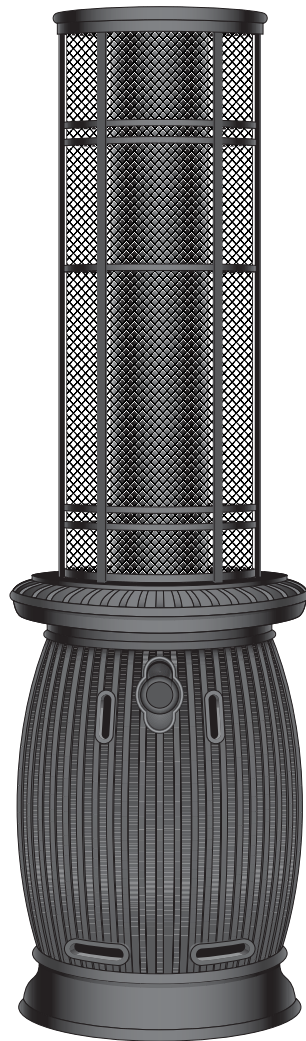


Rinnai

Patio Heater - Model No: PatioPal

SERVICE MANUAL



This appliance shall be installed in accordance with

- **These Instructions**
- **AS 5601 - 'Gas Installations'**
- **Any other local relevant Statutory Regulations.**
- **Service must be performed by an Authorised person.**
- **Do not operate this appliance before reading the Customer Operating Manual.**

TABLE OF CONTENTS

DISMANTLING PROCEDURE	4
RE ASSEMBLY PROCEDURE	6
DIMENSIONAL DRAWING	7
SPECIFICATIONS	8
EXPLODED DIAGRAM & PARTS LIST	9
CONTACT INFORMATION	10

© Copyright Rinnai Australia Pty Ltd ABN 74 005 138 769

All rights reserved

Produced by Technical Services Department

24/11/05 - Issue 1.

No portion or part of this manual may be copied without prior permission from Rinnai Australia.

Rinnai Australia takes no responsibility for the accuracy or otherwise of information contained in this manual, and reserves the right to make modifications and change specifications without notice.



WARNING



Failure to comply with these instructions may result in serious personal injury or damage to the appliance.

***ALL SERVICE WORK MUST BE CARRIED OUT BY AN
AUTHORISED PERSON.***

DO NOT TEST FOR GAS ESCAPES WITH AN OPEN FLAME

This manual has been published by Rinnai Australia Technical Services. We welcome users of this manual to provide feedback and suggestions for improvement purposes.

*SM Patio Pal
Issue N^o1*



**The Australian
Gas Association**

All Rinnai gas products
are AGA certified.



**Quality
Endorsed
Company**

ISO 9001 Lic 4983
SAI Global

Head Office Certified

Distributed and serviced in Australia under a Quality
System certified as complying with ISO 9001 by
SAI Global

DISMANTLING PROCEDURE

Turn 'OFF' Gas supply at the cylinder.

Removal of Flue and Flue Guard assembly

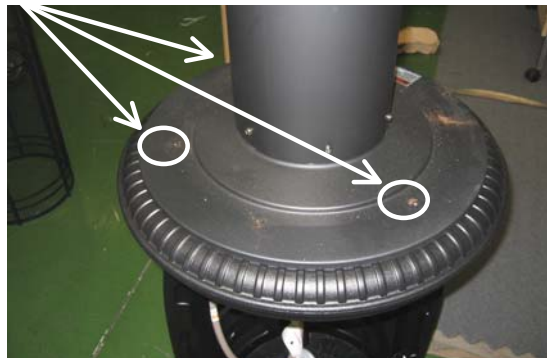
1. Remove 6 x 4mm Alan Key screws from the base of the outer guard.
2. Lift and remove the outer guard from the heater.



3. Remove the three retaining clips that secure the guard.



4. Remove the three screws located between the retaining brackets.



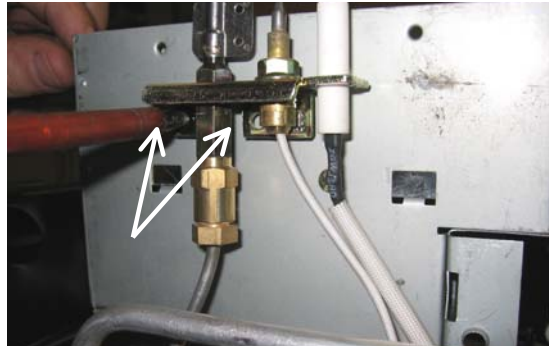
5. Lift the complete flue tube assembly clear from the heater.



DISMANTLING PROCEDURE

Removing the Pilot assembly

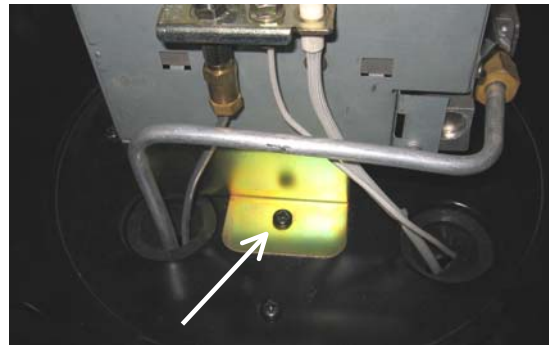
1. Disconnect the pilot tube and remove the two screws securing the pilot bracket.



Removing the Burner assembly

1. Disconnect pilot as previous step.
2. Remove the screw in the base of the burner below the pilot assembly.

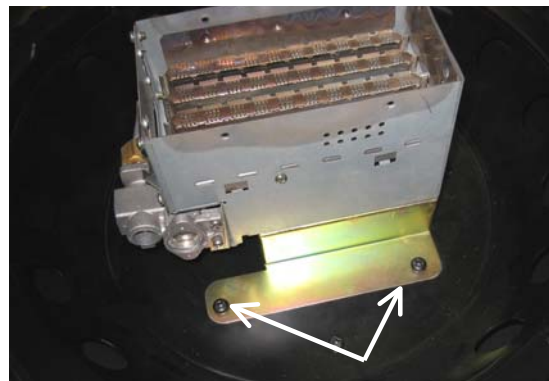
Note: This screw has a loose nut that is only accessible via the lower chamber



3. Remove the two screws located on the opposite side of the burner.

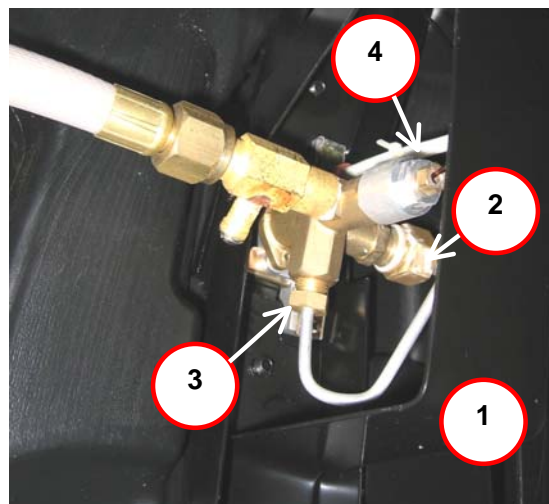
Note: The nuts under these screws are held captive.

4. Disconnect the burner supply tube and remove burner assembly.



Removing the Gas Valve

1. Remove the support bracket behind the gas valve.
2. Disconnect the Burner supply tube.
3. Disconnect the Pilot supply tube.
4. Disconnect the thermocouple lead.



DISMANTLING PROCEDURE

5. From the front gently remove the gas cock knob.
6. Remove the lock nut securing the gas cock.
7. Remove gas cock assembly.



RE ASSEMBLY PROCEDURE

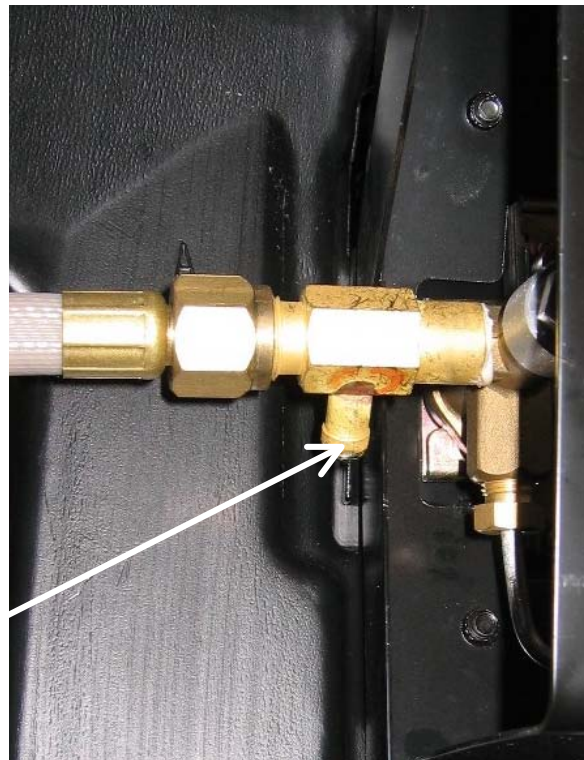
Reverse the procedure to reassemble the heater.



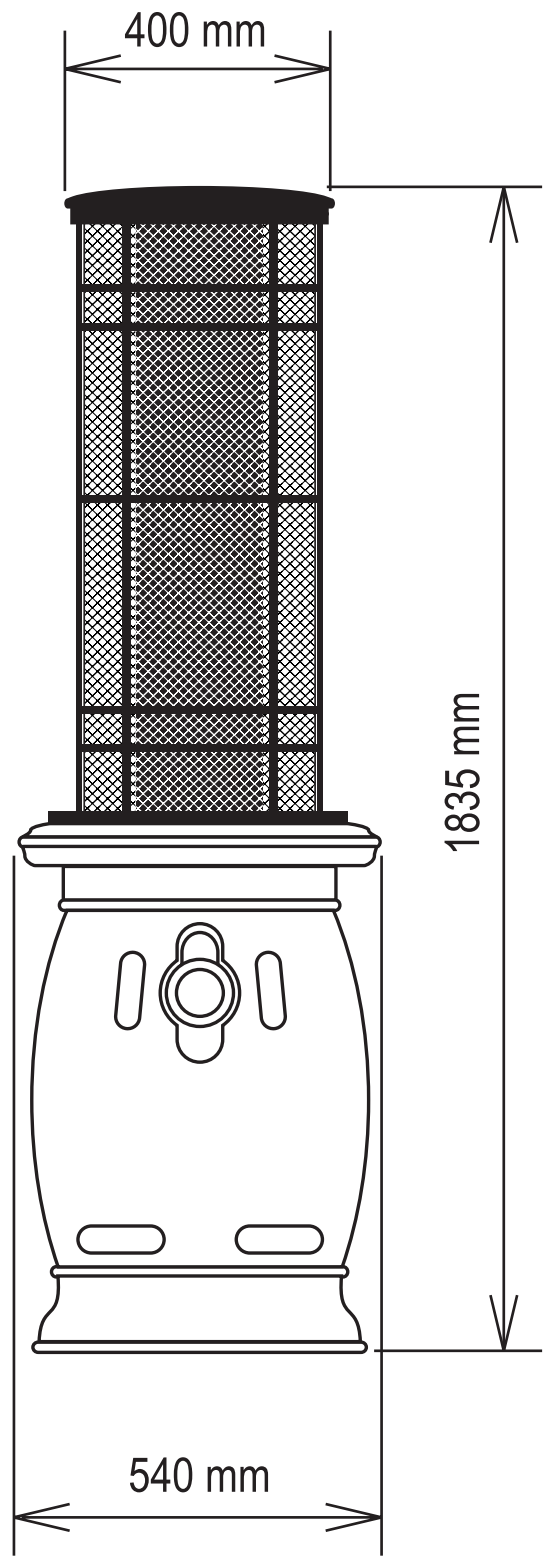
Caution: DO NOT over tightening the screws as it may strip the threads.

When replacing the outer guard over the flue section the baffle pole must locate in a small hole in the top internal section of the lid.

Burner Pressure 2.75 kPa. Test Point



DIMENSIONAL DRAWING



SPECIFICATIONS

Model Identification:	PatioPal
Gas Supply:	Propane
Gas Cylinder Size:	9 kg (not supplied) Certified to AS 1596 / AS 2030.1
Height:	1835 mm
Maximum heater diameter:	Ø 540 mm
Burner Injector pressure:	2.75 kPa
Burner Injector Size:	0.95 mm x 4
Weight: (without gas cylinder) (with filled gas cylinder)	43 kg 54 kg
Pilot lighting method:	Piezo igniter (integral with control valve)
Burner lighting method:	Pilot flame (from ODS)
Gas Consumption:	High: 39.5 MJ/h Low: 18 MJ/h
Burner:	4 Bunsen Burners
Burner material:	Bunsen Burners: 0.3 mm thick 304 Grade Stainless Steel Outer Plate: 0.8 mm thick Zinc Plates steel. Inner Reflector Plate: 0.6 mm thick 304 Stainless Steel
Heat Exchanger Baffle material:	Type 304 stainless steel painted externally with high temperature matt black paint.
Heat Exchanger area:	Approx. 0.45 m ²
Heat Tube material:	Stainless Steel (painted with high temperature matt black paint)
Cylinder enclosure and access door material:	High Density Polyethylene blow moulding
Guard material:	Mild Steel (primed and painted)
Heat Exchanger length & diameter:	907 mm x 200mm
Flame safety devices	1. Flame Failure Sensor 2. ODS (Oxygen Depletion System) - Flame is extinguished if available oxygen level is low. 3. Tilt switch - opens when tilted beyond 20°- 50° in any direction. Returns at less than 15°. Above devices are electronically coupled to shut the solenoid valves of the gas control.
Gas Hose length:	600 mm
Minimum distance from all wall or surface and any overhead structure.	Horizontal - 1000 mm Vertical - 1000 mm
End user assembled components:	None (except LPG Cylinder, Hose and Regulator)

EXPLODED DIAGRAM & PARTS LIST



Item No.	Descriptions	Part No.
1	Mesh Kit	93096031
2	Heat Exchanger Kit	93096049
3	Internal Baffle Kit	93096056
4	The Burner Kit	93096064
5	The Piezo and Valve Kit	93096072
6A	Pilot Head	93096080
6B	Pilot Tube	93099373
6C	Thermocouple	93099381
7	Removable Door and Fixtures Kit	93096098
8	Regulator and Hose Kit	93096106
9	Top Lid Kit	93096114

Rinnai

Rinnai Australia Pty. Ltd. ABN 74 005 138 769

Head Office

10-11 Walker Street,
Braeside, Victoria 3195
P.O. Box 460
Tel: (03) 9271 6625
Fax: (03) 9271 6622

Internet: www.rinnai.com.au E-mail: enquiry@rinnai.com.au

National Help Lines

Spare Parts & Technical Info

Tel: 1300 555 545*

Fax: 1300 300 141*

**Cost of a local call Higher from mobile or public phones.*